

Dongwha 

Dongwha 

Contents

Overview	06	Chairman's Message
	08	Vision & Core Values
	10	Milestones
	12	Global Networks
	14	Business Areas
Business	18	Wood Panel
	38	Chemicals
	60	Auto Life
	74	Media
R&D	92	Research & Development
HRD	106	Dongwha Culture Village
Contacts	110	Contacts

Overview

06	Chairman's Message
08	Vision & Core Values
10	Milestones
12	Global Networks
14	Business Areas

Chairman's Message

We will take a higher leap and drive innovation.

Greeting.

I am MyungHo Seung, the Chairman of Dongwha Group.

Since its foundation in April 1948, Dongwha has evolved into a global company by realizing infinite potential with the driving force of continuous change and innovation. Dongwha has pioneered the domestic wood industry by establishing the Korea's first timber complex and constructing an MDF plant. In addition, Dongwha has solidified its position as an industry leader by vertically integrating the businesses and diversified business portfolio beyond the wood panel, expanding into chemicals, auto life, and media. This strategic expansion has allowed Dongwha to extend its reach beyond Korea and into the global market.

Amidst numerous challenges and uncertainties, Dongwha has overcome obstacles through bold innovation and unwavering pioneering spirit. At the core of our success is our spirit and commitments to overcome challenges. In the face of unprecedented change and global economic shifts, Dongwha remains committed to forging ahead as it always has.

As Dongwha celebrates its 75th anniversary, we are taking significant steps toward the future. Based electrolyte business, we are securing advanced technology and future competitiveness by expanding the the chemical business and investing in proactive and bold R&D. These efforts will undoubtedly drive Dongwha's sustainable growth and shape its success in the years to come.

Please, keep an eye on Dongwha's continued progress and strength in the future. We are committed to doing our best efforts for all, including employees, customers, and society, to share happiness and to achieve sustainable prosperity.

Thank you.

Dongwha Group Chairman **MyungHo Seung**



Vision & Core Values

Vision

Creating Happiness, Respecting People, Building Partnership

Dongwha put people and clients in the center of our vision. It is deeply ingrained in Dongwha's management philosophy that serves as the foundation and source of Dongwha. To bring our vision to life, we have established five Core Values: Autonomy, Collaboration, Transformation, Integrity, and Safety. These Core Values guide the thoughts and actions of every Dongwha employee, serving as the basis for our approach.



Core Values



autonomy

We find ways to reflect on and develop ourselves and become leaders of our work and make great achievements.

Self-awareness/Self-development, Ownership, Responsibility for results



collaboration

We identify other people's strengths, respect their values, accept others' criticisms open-mindedly and create synergy.

Diversity & Inclusion, Open communication



transformation

We always work for our customers' values, set ambitious goals, take on new challenges and manage failures well.

Customer-oriented perspective, Passion for excellence, Rapid implementation of the changes



integrity

We value the public interest, respect humans and take responsibility for our words and deeds.

Abiding by ethical standards



safety

We comply with safety regulations, protect ourselves and our organization from risks and make employees and the working environments healthy.

Safety

Milestones

Marching towards a 100-year Company

2021 ~ Present

- 2023.06** Dongwha Electrolyte commenced Tennessee Electrolyte Plant
- 2022.11** Completed Dongwha R&D Center
- 2022.04** Dongwha Electrolyte Hungary completed Electrolyte · NMP Recycling Plant
- 2021.12** Dongwha Vietnam completed MDF · Laminate Flooring Plant

Sprinting to be a Global Company

2011 ~ 2020

- 2019.08** Acquired Panax Etec (Currently Dongwha Electrolyte)
- 2017.10** Acquired Kotkamills Imprex (Currently Dongwha Finland)
- 2017.08** Completed 2nd Line of MDF Plant for VRG Dongwha in Vietnam
- 2017.04** Acquired fine chemical company Taeyang Chemical
- 2016.11** Completed MPARK Hub
- 2015.06** Hankookilbo declared republication
- 2015.01** Acquired Hankookilbo · The Korea Times
- 2014.04** Announced new CI of Dongwha Group
- 2013.05** Completed new Lumber Plant for Dongwha Australia
- 2012.08** Completed 1st Line of MDF Plant for VRG Dongwha in Vietnam
- 2011.10** Grand-opening of MPARK, Used-car Sales Complex

Managerial Innovation and Globalization

2001 ~ 2010

- 2008.08** Established Global Process Innovation (GPI)
- 2008.08** Established joint venture VRG Dongwha, Vietnam, Moving into the global market in earnest
- 2006.11** Acquired Merbok MDF Plant (Currently Dongwha Malaysia Merbok MDF Plant)
- 2005.07** Acquired Asan MDF Plant of Hansol Homedeco (Currently Dongwha Enterprise Asan MDF Plant)
- 2003.06** Acquired Golden Hope Fiberboard Sdn. Bhd. in Malaysia (Currently Dongwha Malaysia Nilai MDF Plant)
- 2003.05** Changed Dongwha Enterprise CI
- 2001.11** Set up ERP, Began operation of Intranet (GreenNet)

Preparing for a Bigger Leap Forward

1990 ~ 2000

- 2000.09** Acquired Daesung Wood Co., Ltd. (Currently Incheon PB Plant)
- 1998.08** Completed Green Factory
- 1996.08** Moved into lumber business in Australia
- 1996.05** Completed Korea's first Laminate Flooring Plant
- 1995.08** Completed 2nd PB Plant
- 1995.08** Established Dongwha-Affiliated Research Institute
- 1995.07** Dongwha Enterprise newly listed on the KOSDAQ market
- 1994.11** Completed 2nd MDF Plant
- 1993.02** MyungHo Seung, takes office as CEO
- 1992.02** Completed LPM · MFB Plant
- 1991.11** Completed Resin Plant

Growing into a Leading Wood Company of Korea

1975 ~ 1989

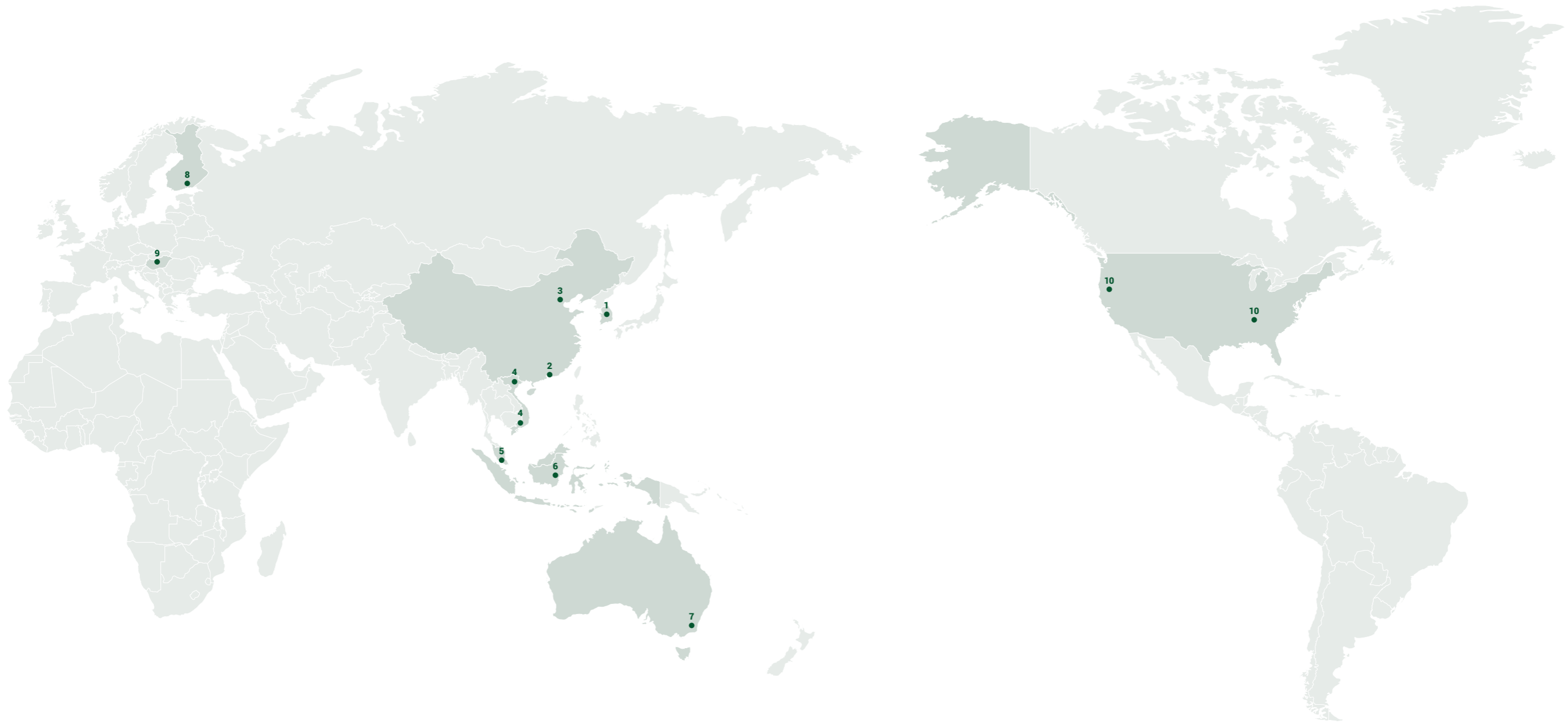
- 1989.07** Entered into the chemical industry after completing Formaldehyde Plant
- 1986.10** Completed Korea's first MDF Plant
- 1977.09** Completed PB Plant

Beginning of Dongwha

1948 ~ 1974

- 1972.03** Established nation's first lumber industrial complex in Incheon
- 1971.09** Completed Korea's first timber yard
- 1948.04** Established Dongwha Enterprise Co., Ltd.

Global Networks



We are stretching all around the world

Dongwha Group has successfully established overseas bases in Vietnam, Australia, Finland, and the United States, demonstrating our commitment to a global strategy. With a robust global network and a localization strategy, we will make significant strides as a leading company in the global market.

- 1 Korea** Dongwha Enterprise
Taeyang Chemical
Dongwha Electrolyte
Dongwha R&D Center
MPARK
Hankookilbo · The Korea Times

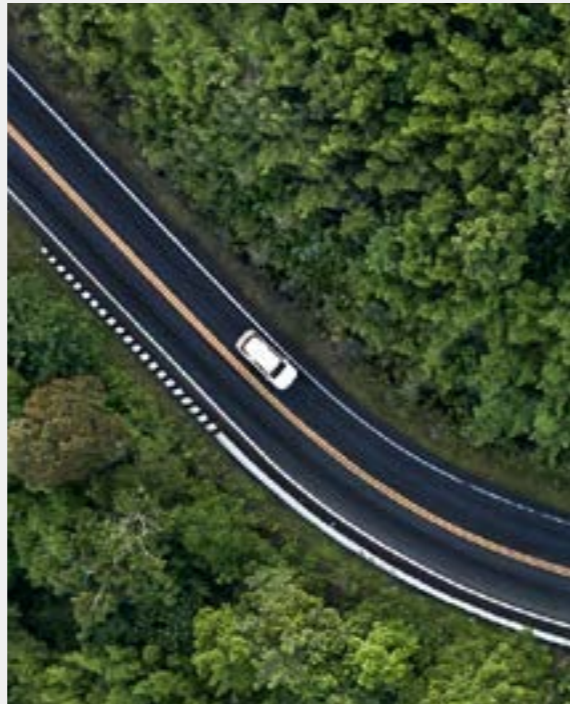
- 2 Hong Kong** Dongwha International
- 3 China** Dongwha Electrolyte Tianjin
- 4 Vietnam** VRG Dongwha
Dongwha Vietnam
- 5 Malaysia** Dongwha Malaysia
Dongwha Electrolyte Malaysia
- 6 Indonesia** Dongwha Indonesia Rep. Office

- 7 Australia** Dongwha Australia
- 8 Finland** Dongwha Finland
- 9 Hungary** Dongwha Electrlyte Hungary
- 10 USA** Dongwha USA
Dongwha Electrlyte USA

Business Areas



Wood Panel



Chemicals



Auto Life



Media

Business

18	Wood Panel
38	Chemicals
60	Auto Life
74	Media



Wood Panel

We are changing the housing paradigm and creating beautiful living spaces.

Wood Panel

Wood Panel is the result of Dongwha's 75 years of technological advancement and innovation.

Centering Dongwha Enterprise, we produce board products, such as PB and MDF as well as interior building materials including flooring, and wall panels. We successfully established the Korea's first lumber industrial complex and laminate flooring plant, solidifying our position as an industry leader. Also, our differentiated technology, expertise and know-how have earned recognition with outstanding quality.

Since our entry into the Australian market in 1996, followed by the expansion into Malaysia in 2003 and Vietnam in 2008, we have been actively pursuing opportunities to go beyond domestic market. Furthermore, we have developed eco-friendly materials and construction methods, realizing the virtuous circle of timber.

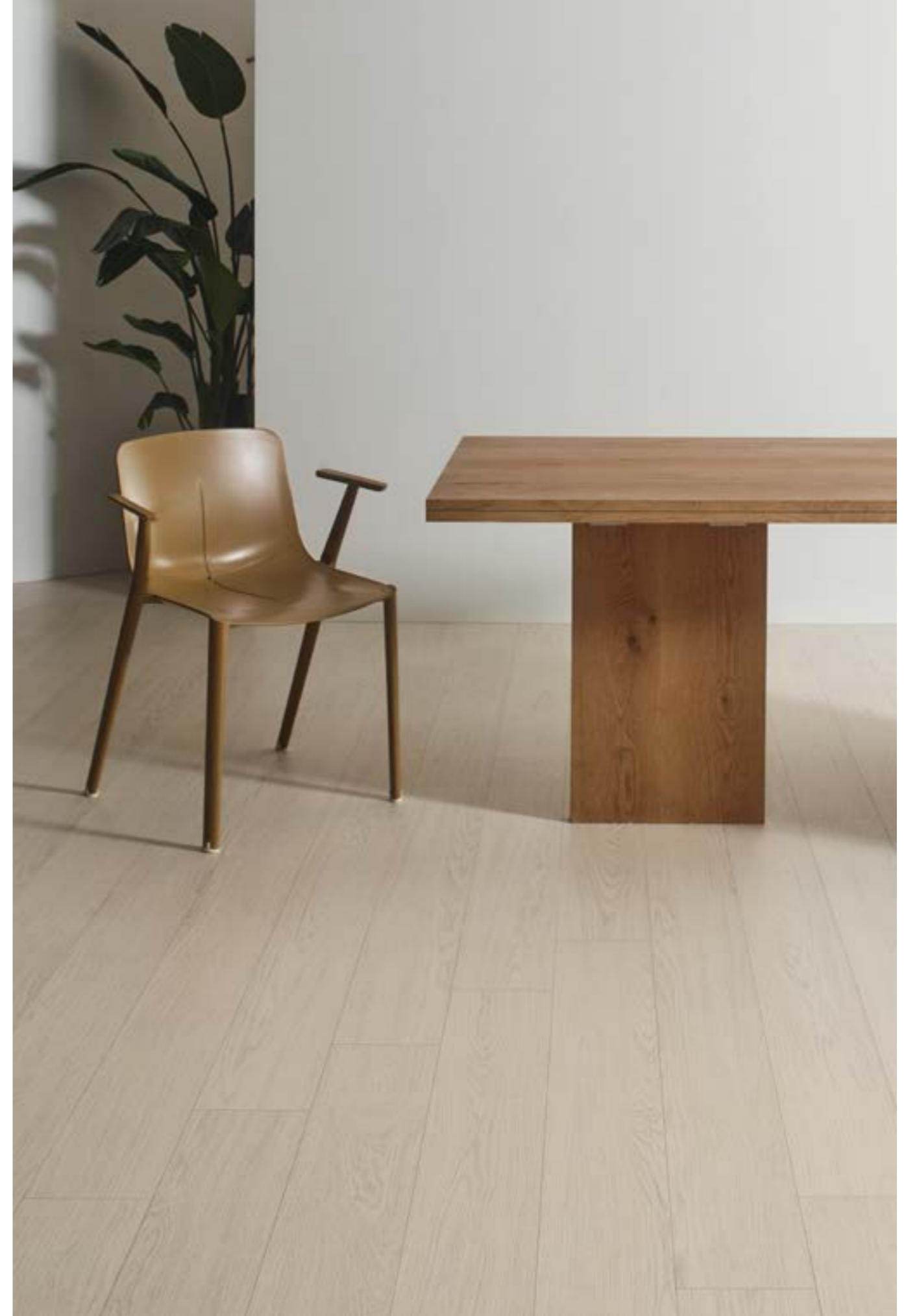
We are committed to taking responsibility for the environment and pursuing sustainable development with society.

Company Dongwha Enterprise, VRG Dongwha, Dongwha Vietnam, Dongwha Malaysia, Dongwha Australia

Business Board, Interior Building Materials, Lumber

Brand **Board**
Dongwha Eco Board, Dongwha Design Board

Interior Building Materials
Dongwha Nature Flooring, Dongwha Dizainwall,
Dongwha Nature Leum, Dongwha Nature Tille,
Dongwha Ex-terior





Business Sites

Domestic Business Sites

- Dongwha Enterprise** Seoul Office
53-2 Yeouinaru-ro, Yeongdeungpo-gu, Seoul
- Incheon PB Plant
164 Wolmi-ro, Jung-gu, Incheon
- Incheon MDF Plant
133 Yeomgok-ro, Seo-gu, Incheon
- Incheon Laminate Flooring Plant
28 Gajeong-ro 97-bungil, Seo-gu, Incheon
- Asan MDF Plant
1181-40 Hyeondai-ro, Inju-myun, Asan-si, Chungcheongam-do

Overseas Business Sites

- Dongwha Malaysia** Nilai MDF Plant
Lot 3726 & 3728, Nilai Industrial Estate, Mukim Setul, Daerah Seremban, 71800 Nilai, Negeri Sembilan, Malaysia
- Merbok MDF Plant
Lot 2998, Jalan Raya Merbok, 08400 Merbok, Kedah Darul Aman, Malaysia
- VRG Dongwha** Ho Chi Minh MDF Plant
Lot G. Minh Hung III Industrial Park, Minh Hung commune, Chon Thanh District, Binh Phuoc Province, Vietnam
- Dongwha Vietnam** Hanoi MDF · Laminate Flooring Plant
Lot CN1,CN2,CN3,CN4Song Cong II Industrial Park, Tan Quang Commune, Song Cong City, Thai Nguyen Province, Vietnam
- Dongwha Australia** Bombala Lumber Plant
1 Sandy Lane Bombala NSW 2632, Australia



Dongwha produces diverse board products that are widely used in furniture and interior applications with its unique design, production, and technology capabilities. Our focus on eco-friendly materials and processes enables us to contribute to the virtuous cycle of timber and drive sustainable innovation in the wood industry.

Brand | Dongwha Eco Board, Dongwha Design Board

Board Products

Board

Particle Board (PB) It is a product made by applying eco-friendly adhesives to wood by-products or fiber pieces, which are then subjected to high temperature and pressure.

Feature | Contributing to the virtuous cycle of wood

Use | Furniture interior materials, Structure materials

Medium Density Fiberboard (MDF) It is a product made of fiber extracted from wood, which is then processed using eco-friendly adhesives and subjected to high temperature and pressure.

Feature | Dense texture and smooth surface compared to PB

Use | Furniture interior materials, Structure materials

Decorative Board (MFB) It is a processed board product by applying heat and pressure to PB or MDF, bonding them with eco-friendly sheets. We produce a wide range of products with various specifications and patterns by using the state-of-the-art facility.

Feature | Colorful patterns and realistic textures, a reasonable price with an integrated process from board production to surface materials adhesion

Use | Furniture interior materials





Dongwha Enterprise constructed the Korea's first laminate flooring plant in 1996, entering into the Interior building material business. Through the launch of high-value-added products that elevate the board's value, we have successfully expanded our business areas. In addition, by shifting the standard of flooring from PVC to wood materials, we introduced a new paradigm for residential spaces. We are committed to realizing a beautiful and enriching lifestyle through continuous research and development of eco-friendly and high-quality products.

Brand | Dongwha Nature Flooring, Dongwha Dizainwall, Dongwha Nature Leum, Dongwha Nature Tille, Dongwha Ex-terior

Interior Building Materials Products

Flooring

NAF Flooring This is a SE0-grade eco-friendly product with excellent durability, water resistance, and thermal conductivity, making it particularly well-suited for Korean residential environments. It offers a wide range of patterns and textures, providing exceptional design options to customers.

Main Products | Natus Jin, Natus Duo, Natus Kang Series

Laminate Flooring It is practical flooring materials which are known for its surface durability, resisting dents, scratches, and stains with ease. It is eco-friendly product that emits relatively less harmful substances during construction due to the absence of adhesives.

Main Products | Click, Crozen, Eyeon

Hardwood Flooring It is premium flooring materials that retain the texture, feel, and natural color of woods by using the natural hardwood end-plate.

Main Products | Baum Series

Natural Marble Flooring It is the high-end flooring materials that retain natural beauty of natural marble. It implements high-end interior with its exceptional aesthetics, durability, and ease of care.

Main Products | Marbon

Linoleum Flooring This is a PVC flooring material that provides comfortable living space by utilizing our eco-friendly plasticizers harmless to human body. It features a delicate design that brings out the wooden texture and is easy to manage.

Main Products | Nature Leum Series

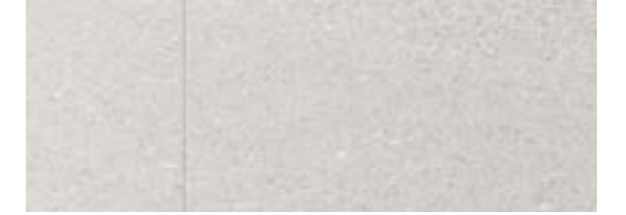
Deco Tiles It is a commercial high-end flooring tile with a variety of styles including wood, marble, granite, and even carpet-like design. Available for various commercial facilities such as offices, food and beverage areas, and more.

Main Products | Nature Tille

Commerce It is high-quality flooring specifically designed for specialized environments, including schools, gyms, and computer labs.

Main Products | School Floor, Top Floor





Wall Panel

Design Wall Panels

This is the first wooden wall panel developed in Korea, displaying realistic textures of various materials, such as stone, wood, and fabric. With a special coating and patented flame retardant technology, it exhibits exceptional durability and fire resistance.

Main Products | Dizainwall Series, Signiwall(Big Slab Wall)

Semi-Non-Combustible Wall Panels

This is wall panel with excellent fire stability, effectively preventing the spread of fire while maintaining a high level of durability and design. It is predominantly used in commercial spaces where the use of semi-non-combustible materials is required such as restaurants and maternity homes.

Main Products | SafeWall Series

Display System Panels

This is a finishing material designed for displaying purposes that allows products to be displayed and stored on a wall. Different patterns and specifications are available to match the characteristics or preference of a shop, and it allows small spaces to be effectively utilized.

Main Products | SpaceWall

Sound Absorbing Wall Panels

This product boasts the strongest sound absorption functionality and premium interior finishing. Depending on the application, there are various designs and surfaces available for each different needs.

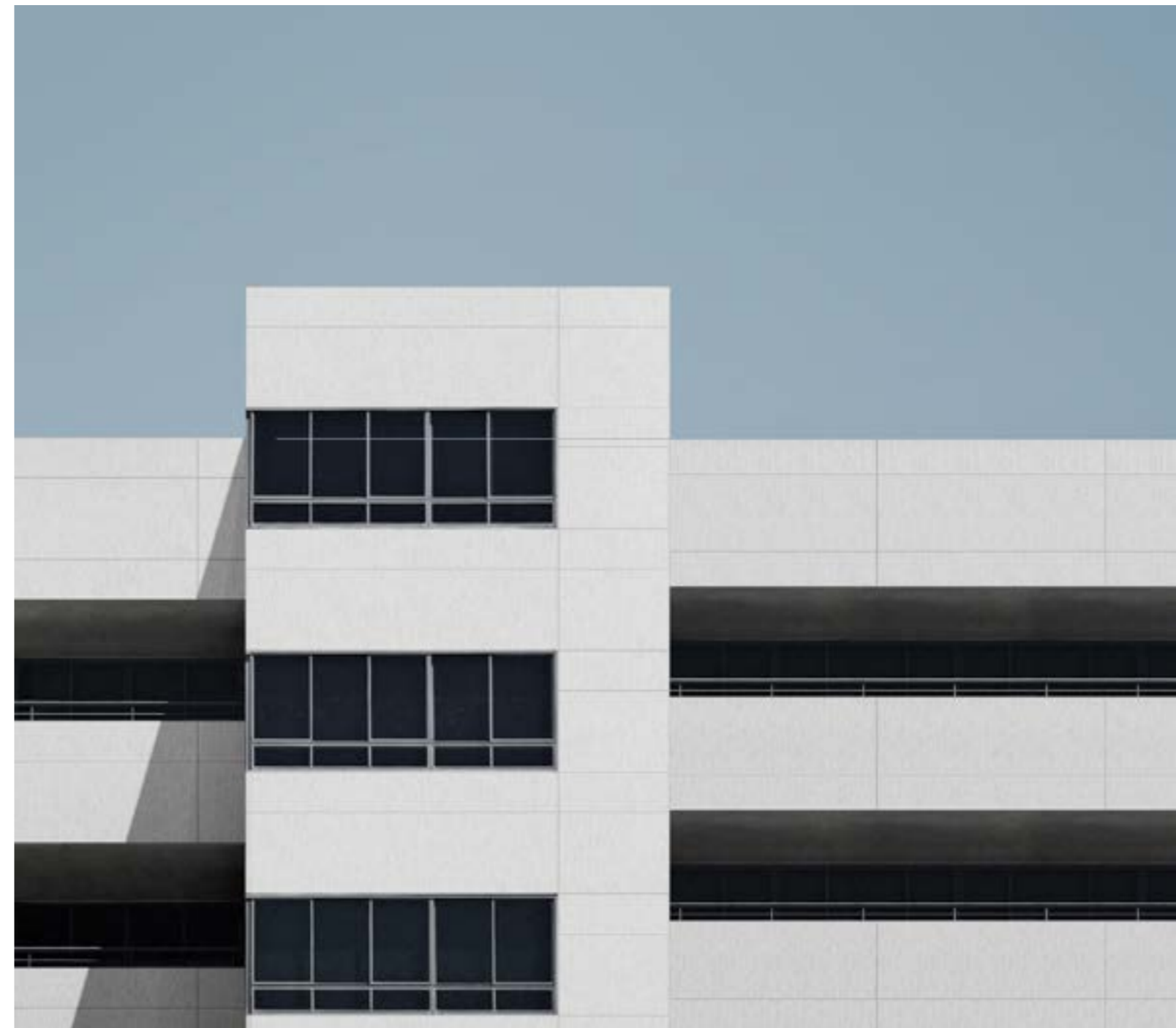
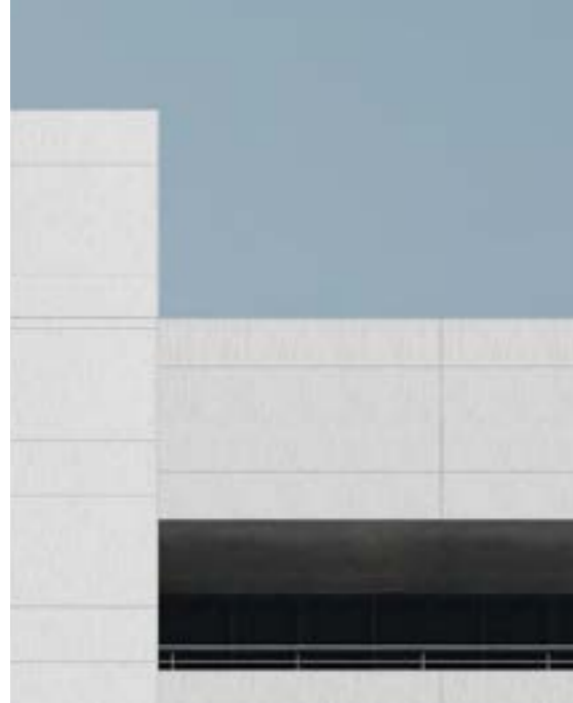
Main Products | Ecostec

Interior Building Materials Products

Exterior Materials

**External Wall
Finishing
Materials** It is exterior building materials with excellent flame retardancy,
durability, and water resistance. It is easy to process into the
desired shape and it enables neat construction without the need
for separate bolts or pieces.

Main Products | Ex-cover





Lumber is a wood material for construction and industrial use by cutting raw timber into certain standards. Dongwha Enterprise established its first overseas production base in 1996 as a lumber production plant in Australia. In 2011, we acquired Willmott Timbers, a lumber company based in the Bombala, Australia. Subsequently, we constructed a large-scale lumber plant in 2013 from which produces 140,000m² of lumber and deck materials annually.



Chemicals

We create a new future by leveraging technologies that enhance the value of life.

Chemicals

Dongwha chemical business has dedicated to enhancing the safety and well-being of our customers through innovations in the field of fine chemicals. Our commitment has resulted in pioneering eco-friendly resin development and the creation of green surface materials, all accomplished through Dongwha's exclusive technology.

With our expansion into the field of lithium-ion battery materials through the acquisition of Panax Etec (now Dongwha Electrolyte) in 2019, we are actively working to establish ourselves as a global chemical company by leveraging our overwhelming R&D capabilities.

We will set a new standard for sustainable future with constant challenges and technological innovation.

Company Dongwha Enterprise, Taeyang Chemical,
Dongwha Finland, Dongwha Electrolyte

Business Fine Chemicals, Surface Materials, Lithium-ion Battery Materials

Brand **Surface materials**
Dongwha LPM, Dongwha Imprex, Dongwha Korplex

Electrolyte
Dongwha StarLyte





Business Sites

Domestic Business Sites

Dongwha Enterprise

Seoul Office
53-2 Yeouinaru-ro, Yeongdeungpo-gu, Seoul

Incheon 1st Resin Plant · Surface Materials Plant
133 Yeomgok-ro, Seo-gu, Incheon

Incheon 2nd Resin Plant
164 Wolmi-ro, Jung-gu, Incheon

Taeyang Chemical

Incheon Head Office · 1st Resin Plant
34 Namdong-daero 79beon-gil, Namdong-gu, Incheon

Incheon 2nd Resin Plant
19 Namdong-daero 79beon-gil, Namdong-gu, Incheon

Dongwha Electrolyte

Nonsan Head Office · Electrolyte Plant
45 Saneopdanji-ro 5-gil, Seongdong-gu, Nonsan, Chungcheongam-do

Overseas Business Sites

Dongwha Finland

Kotka Surface Materials Plant
P.O. BOX 17 / FI-48101 Kotka, Finland

Dongwha Electrolyte Tianjin

Tianjin Electrolyte Plant
Xinye 8 Street and Xinsheng Road Street Intersection, West District of TEDA, Tianjin, China

Dongwha Electrolyte Malaysia

Senai Electrolyte Plant
PTD 103252, Jalan Idaman 3/11, Taman Desa Idaman, Senai Industrial Park, 81400 Senai, Johor, Malaysia

Dongwha Electrolyte Hungary

Soskut Electrolyte Plant · NMP Recycling Plant
Ipari park 067/4, Soskut, Hungary 2038

Dongwha Electrolyte USA

Tennessee Electrolyte Plant
4400 Guthrie HWY, Clarksville TN USA



Dongwha Enterprise produces a wide range of resin products that serve as essential raw materials in various everyday products through its fine chemical business. Leveraging our extensive chemical R&D expertise, we enhance the competitiveness of our wood panel business and drive the development of eco-friendly construction methods and products.



Fine Chemicals Products

Synthetic Resins

Phenolic Resin As a fundamental material, it exhibits excellent heat resistance, chemical resistance, and adhesion.

Use | Insulation, TEGO Film/HPL Sheet impregnation, Electronic materials, Abrasives, and more

Melamine Resin This is thermosetting resin obtained through the heating condensation reaction of melamine and formaldehyde. The product boasts excellent heat resistance, chemical resistance, and electrical insulation properties.

Use | Lumber, HPL Sheet/LPM Sheet impregnation, Textiles, and more

Urea Resin Milky white thermosetting resin obtained by the heating condensation of urea and formaldehyde. It is valued for its economical nature, excellent adhesion, and curing properties.

Use | Lumber, LPM Sheet impregnation, Casting, Textiles, and more

Aqueous Emulsion EVA-based and olefin-based resin. It is known for its excellent applicability, offering exceptional initial adhesion regardless of the film material and is easily utilized as an aqueous emulsion type.

Use | Flooring, Overlay, Textiles, Lumber, and more

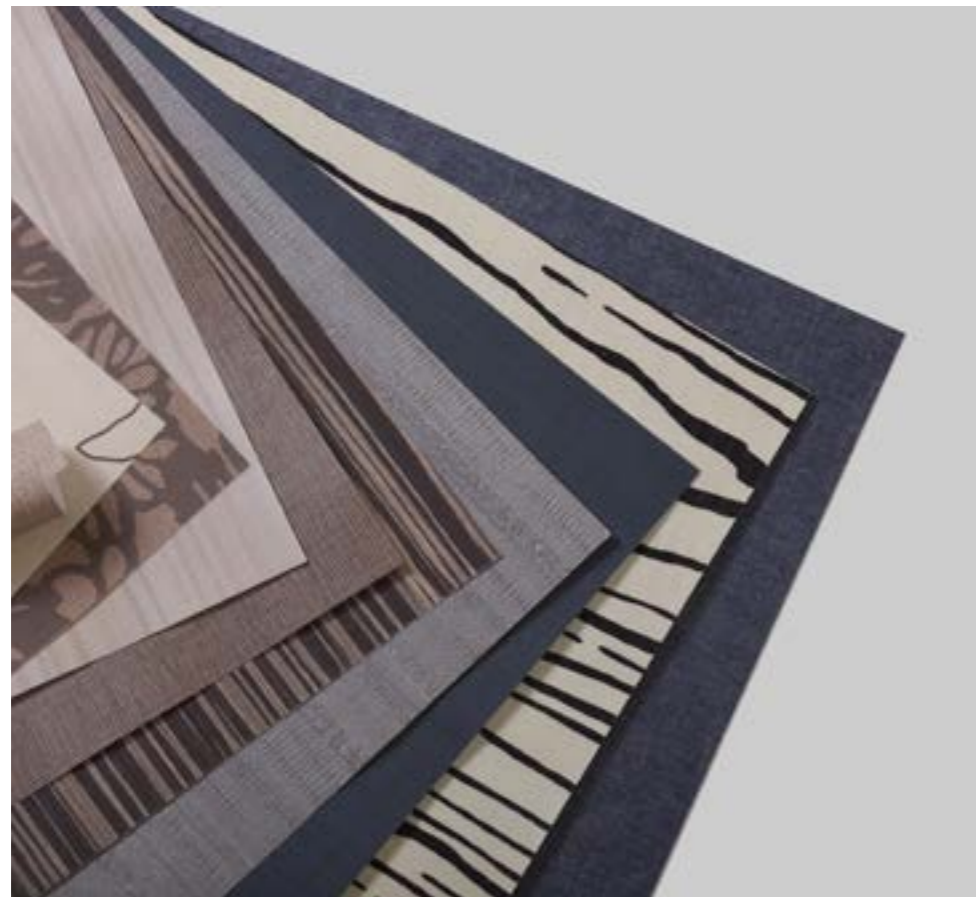
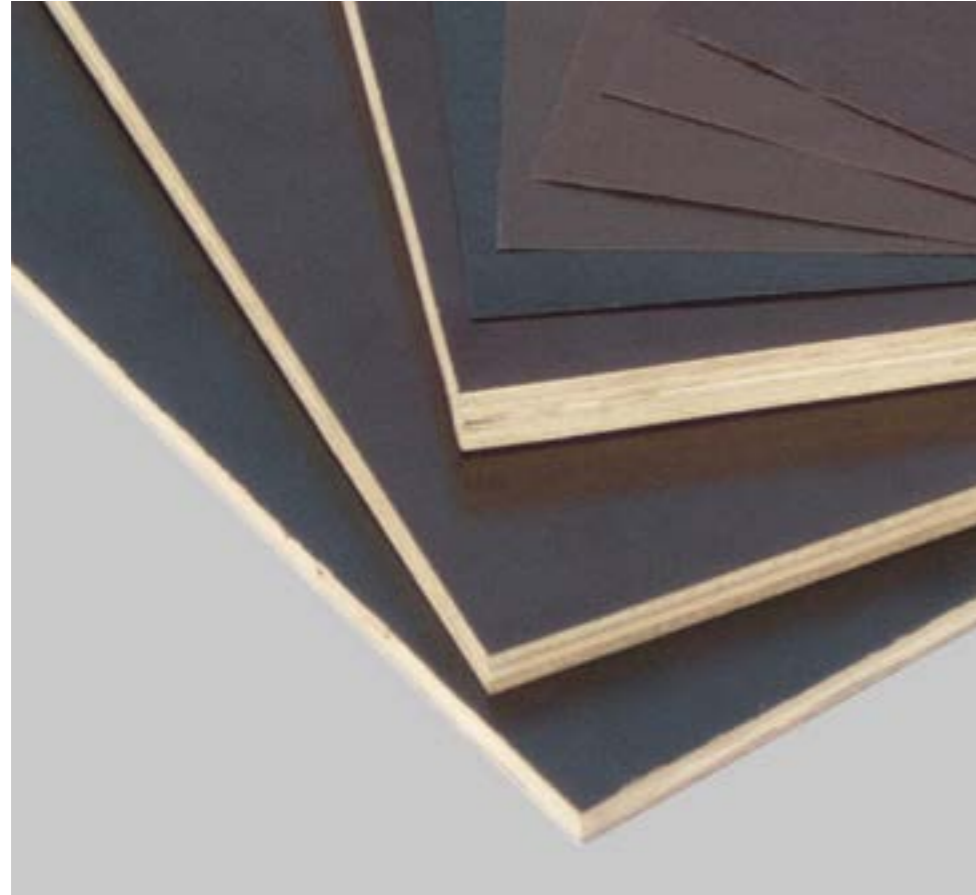
Radiating Agent It is an emulsion for P.P Filament yarn and ceramic yarn insulation, boasting its excellent electrically conductive properties and high density.

Use | Synthetic fibers, Ceramic fibers, and other



We produce eco-friendly surface materials used as resource for board products. With our expertise and accumulated technology, we have been at the forefront of producing TEGO Film for plywood used in concrete formwork, and we are actively diversifying our product portfolio to explore new markets.

Brand | Dongwha LPM, Dongwha Imprex, Dongwha Korplex



Surface Materials Products

Surface materials

Melamine Impregnated Products

LPM Sheet (Low Pressure Melamine Sheet)

LPM is an eco-friendly surface finishing materials applied through hot-pressing and bonding processes to wooden materials such as PB and MDF. It is produced by impregnating patterned paper with melamine resin and urea resin.

Use | Surface material for furniture and finishing materials

HPL Sheet (High Pressure Laminate Sheet)_ Overlay Paper

Sheet produced by impregnating a special European fiber with melamine resin. It is highly durable and provides protection to maintain its shape.

Use | Flooring, Interior/exterior decoration, Furniture materials, Compact panel, Playground equipment, and Landscape finishing materials

HPL Sheet (High Pressure Laminate Sheet)_ Pattern Paper

Sheet produced by impregnating colorful patterned paper with melamine resin and urea resin. It can be postformed, allowing for flexibility in shaping and design.

Use | Flooring, Interior/exterior decoration, Furniture materials, Compact panel, Playground equipment, and Landscape finishing materials

Phenol Impregnated Products

TEGO Film

TEGO Film is produced by impregnating low weight kraft paper with phenolic resin. Its primary application is architectural(formwork) concrete panels due to its high water and stain resistance.

Use | Concrete shuttering for construction use(formwork), Barracks panels for livestock, Interior materials for commercial vehicle and ships

HPL Sheet (High Pressure Laminate Sheet)_ Core Paper

Sheet produced by impregnating the kraft paper with phenolic resin.

It determines postforming of HPL by scale as well as strength retention, cushioning effect, and thickness.

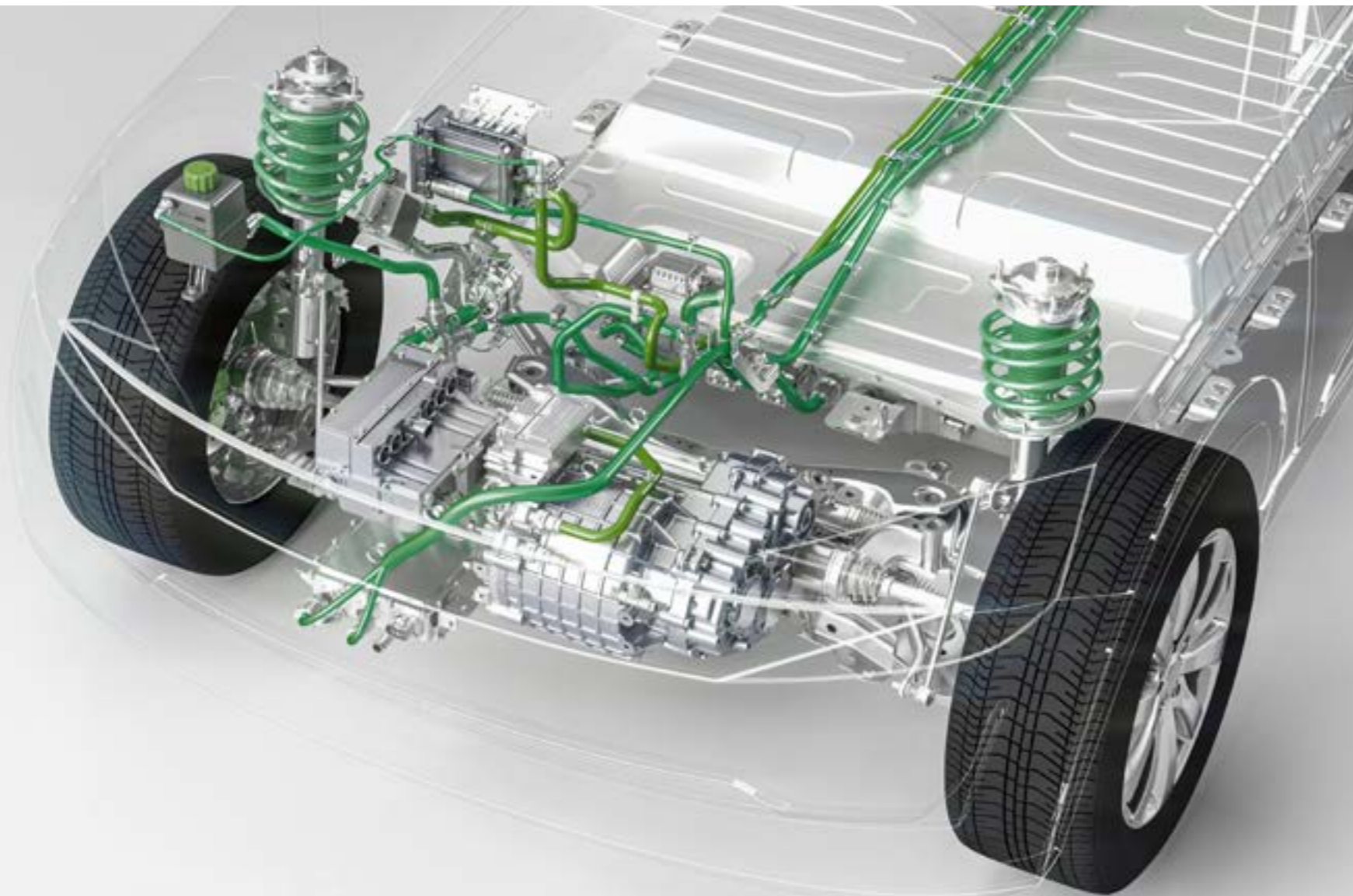
Use | Flooring, Interior/exterior decoration, Furniture materials, Compact panel, Playground equipment, and Landscape finishing materials



Lithium-ion Battery Materials Business Introduction

Dongwha acquired Panax Etec (now Dongwha Electrolyte) in 2019, entering into the Lithium-ion battery materials business. Dongwha Electrolyte produces electrolyte, a core material for lithium-ion batteries. With a solid global network and in-house R&D capabilities, we have achieved world-class business competitiveness. Moving forward, we remain dedicated to leading the lithium-ion battery materials industry through continuous technological innovation and close cooperation with our customers.

- Strength** Ability to formulate and make customized electrolyte to customer
Ability to design and synthesize new additive
Establishment of global supply chain
Research & Development capabilities
- Brand** Dongwha StarLyte



Electrolyte for Lithium-ion batteries

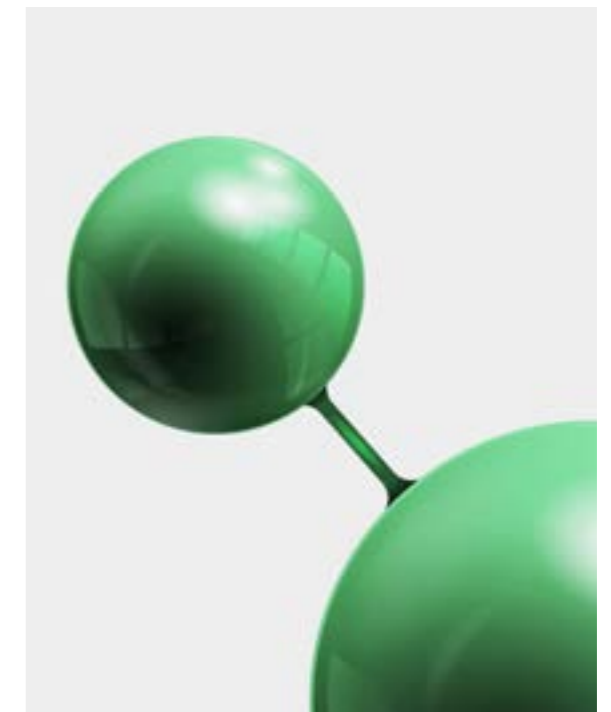
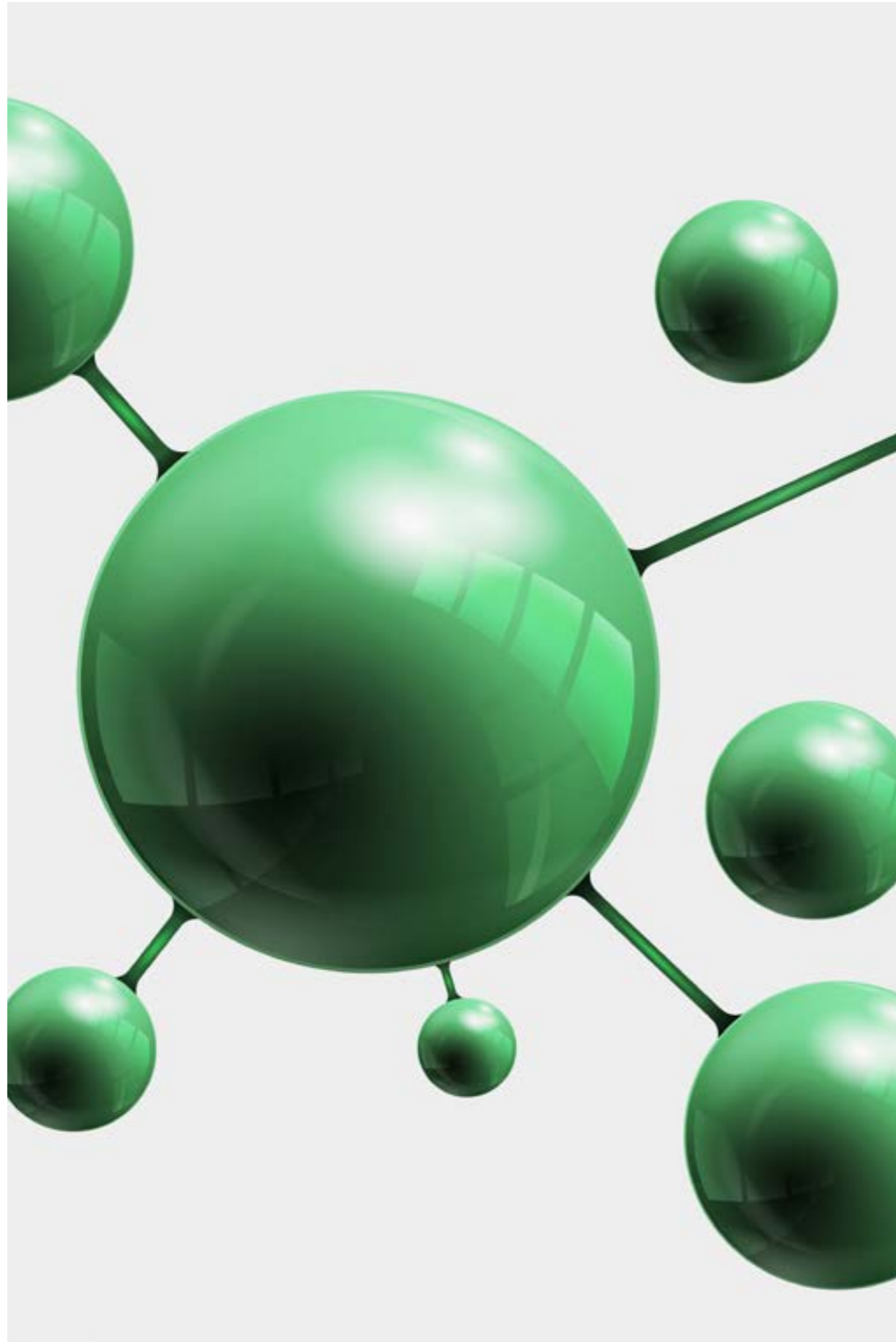
An electrolyte is a vital component for lithium-ion batteries as it facilitates the movement of lithium-ions between the anode and cathode.

Dongwha Electrolyte specializes in the production of high-quality and exceptionally stable electrolytes, leveraging its differentiated technology. Additionally, we are also applied in lithium primary batteries and capacitors, showcasing the versatility and adaptability of our electrolyte products.

Lithium-ion Battery Materials Products

Additives for Electrolyte

Additives, a component of electrolyte, determines the output, lifespan, and stability of batteries. Utilizing its distinctive technology and molecular design capabilities, Dongwha Electrolyte has successfully developed a new additive called PA800. This achievement has contributed to the production of highly reliable and stable electrolyte.





NMP Recycling Dongwha Electrolyte is actively involved in a business focused on the purification of NMP (N-Methyl Pyrrolidone), a cathode material binder solvent essential in lithium-ion battery production. The primary goal of this initiative is to develop an efficient process for purifying NMP, allowing for its effective reuse.



Auto Life

We set the standard for trustworthy automobile transactions.

Auto Life

As the first corporate used-car sales complex in Korea, MPARK opened its doors in 2011 and has since revolutionized the landscape of the used-car distribution ecosystem with its extensive scale and convenient services. We offer comprehensive services for the sale and purchase of used-cars, leading the way in fostering a culture of trustworthy automobile transactions.

Company MPARK, MPARK Service, MPARK Auto Service
Business Used-car Sales Complex
Used-car Sales Support Business





MPARK is a large-scale used-car sales complex with a gross floor area of 247,761m², capable of displaying over 10,000 vehicles. With more than 100 used-car dealerships in the complex, we are creating a professional used-car trading culture.

Brand | MPARK

Used-car Sales Complex Introduction

Comprising three distinct complexes, MPARK features an exhibition hall with the capacity to showcase over 10,000 vehicles at once, along with a spacious customer parking lot accommodating more than 1,500 parking spaces.



MPARK Tower

Total floor area_ 99,873m²
Building size_ 9 floors · 1 basement
Number of car for display_ 4,500 vehicles
Customer parking lot_ 600 vehicles



MPARK Land

Total floor area_ 72,541m²
Building size_ 2 floors · 1 basement
Number of car for display_ 2,500 vehicles
Customer parking lot_ 300 vehicles



MPARK Hub

Total floor area_ 94,938m²
Building size_ 9 floors · 1 basement
Number of car for display_ 3,630 vehicles
Customer parking lot_ 660 vehicles



Used-car Sales Support Service

Business Introduction

We offer comprehensive services, including vehicle performance inspections, quality assurance, transfer registration, and insurance status, to facilitate seamless used-car trading processes.





Car Sales Support Service

Used-car Performance Inspection

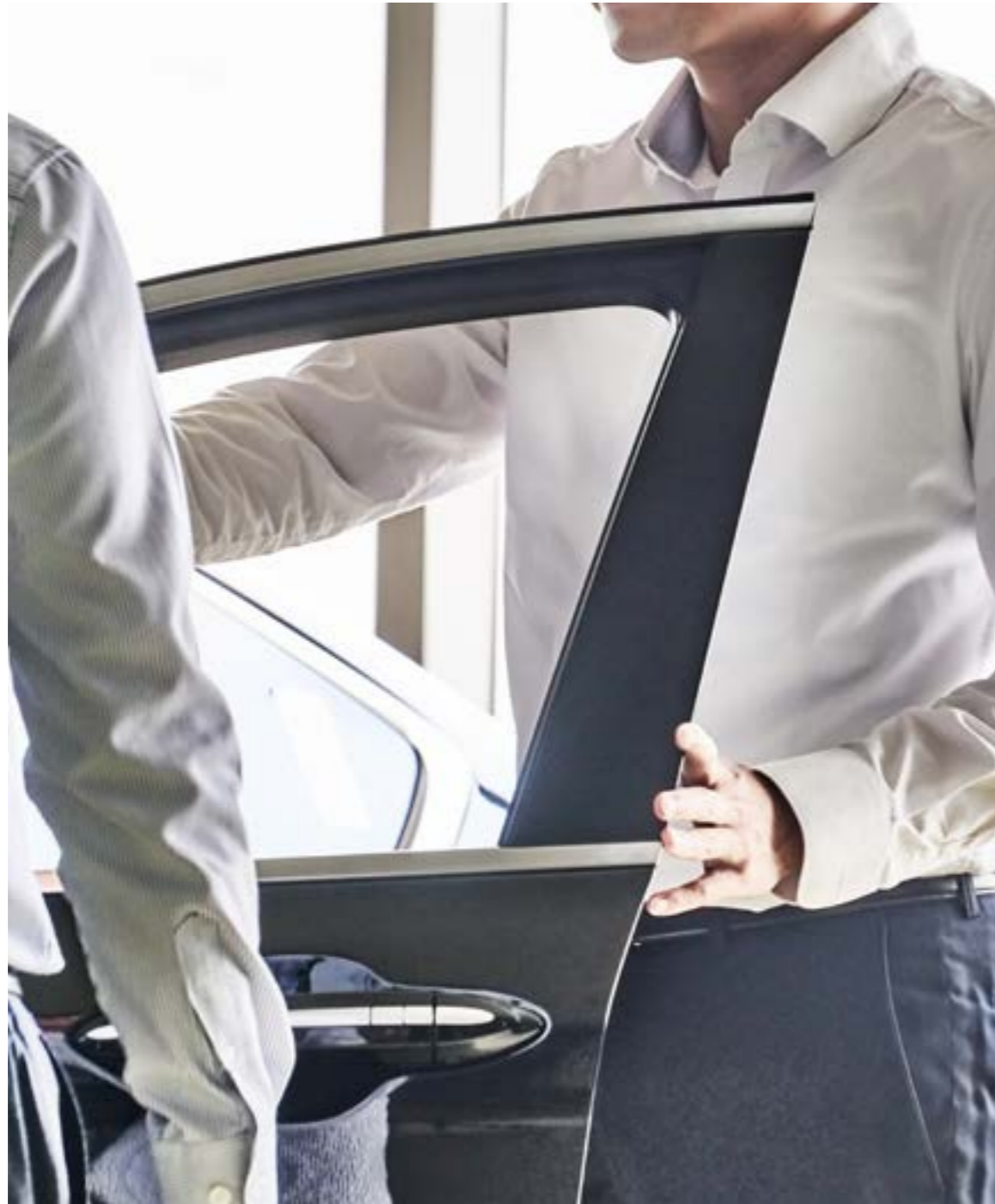
We carry out systematic and objective vehicle evaluation at our dedicated performance inspection center.

Maintenance · Commercialization Service

For higher commercial value of vehicles, we provide services including car maintenance and interior/exterior improvement (painting, polishing, car washing, and repair).

Photograph Service

We have introduced an automated photo studio that enables us to capture high-quality images of the exterior and interior of vehicles in less than a minute.



Car Purchase Support Service

Latest facilities, convenient environment for our customers
To ensure comfortable shopping experience for our customers, we maintain our facilities in the best condition throughout the year with professional facility management team.

Providing real time information on listed properties
MPARK is equipped with an integrated warehousing system to provide real-time sales information on our website.

Media

As a mediator for social harmony and integration, we will take the lead in forming a society that values people above all else.



Media

Dongwha Group made its entry into the media business in 2015 through the acquisition of Hankookilbo and The Korea Times. In addition to media, we actively contribute to enriching society by expanding our presence in culture, and contents.

Company Hankookilbo, The Korea Times, Global E&B, Donggeurami, Sportstoto-Korea

Business Media, Culture, Contents





Hankookilbo and The Korea Times uphold the founding spirit of unbiased journalism, embodying the essential existential value of the press. In the digital era, we strive to pave new directions for new media, adapting to the evolving digital landscape while maintaining their commitment to delivering reliable and balanced news.



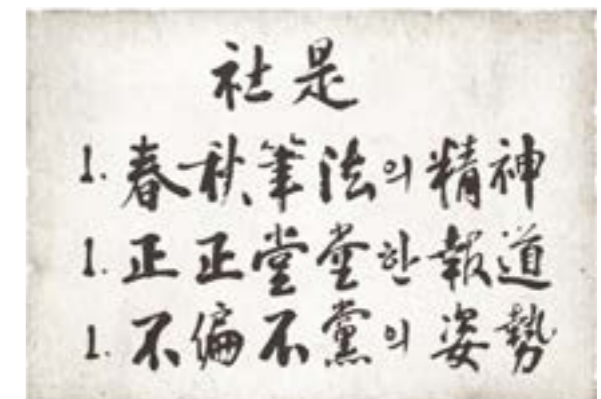
As the nation's only centrist newspaper, Hankookilbo prides itself on having faithfully performed its role of balancing society without being easily swayed by political groups or ideologies since its founding. As a mediator for social harmony and integration, we will take the lead in forming a society that values people above all else.

Principle

Hankookilbo, since its establishment in June 09, 1954, has embraced "the spirit of laconicism, fair and justifiable reporting, and an impartial attitude" towards any ideology or region. This principles of honest reporting, impartiality, and the pursuit of truth are the will and determination of the members of Hankookilbo.

Editorial Direction

In 2015, celebrating its 61th anniversary, Hankookilbo embarked on a re-publish and introduced a new vision of "harmony, integration, and people" alongside its founding principles after eliminating all poor-management. For many years to come, we will act as a mediator for harmony and unity, not a facilitator for conflict and division, by listening to various opinions and providing a clear direction for our society. We will continue to make every effort to create a world where people live their lives in harmony by providing support and caring for the underprivileged with news that focuses on people.



The Korea Times



The Korea Times, founded in 1950 as the first English-language newspaper in Korea, has published its 20,000th issue in April 2015. We will pursue the truth and serve as a bridge between domestic and global readers.

Editorial Direction

The Korea Times is an English newspaper that reports impartial and unbiased towards any particular political ideology. As a ray of light that seeks truth, we will continue to serve as a bridge between domestic and global readers, and we will do our utmost to become the newspaper with the most youthful mindset via the latest news and in-depth analysis despite being the oldest English-language newspaper.



Hankookilbo's culture business plays a significant role in contributing to the enrichment of society by expanding the scope and impact of related fields.

Culture and Arts We support and promote Korean culture, arts, and talents through organizing and sponsoring events.

- Miss Korea Competition
- Hankookilbo Literature Award
- Korea Publishing Culture Prize
- Hankookilbo Annual Spring Literary Contest
- Korean Air Travel Photo Contest

Sports and Leisure We contribute to the revitalization of the Korea sports, discovering and nurturing sports talents while promoting a healthier lifestyle for individuals.

- Sportstoto
- Turtle Marathon
- Bonghwang High school Baseball Championship
- Cheorwon DMZ International Peace Marathon
- Myeonginjeon (Go Championship)
- Mediheal · Hankookilbo Championship

Public interest and Campaigns We host various campaigns to raise awareness of social issues and promote public interest.

- Korea Local Autonomy & Management Innovation Expo
- Korea Local Autonomy & Management Contest
- Seoul Service Awards
- Clean Leaders
- Green Housing Award
- Korea Academy

Forums We provide insights into the present era with lectures of world-class scholars and experts.

- Korea Forum
- KOR-ASIA Forum
- MiJiDab Forum





Contents Business Introduction

Beginning with “Pet Stories” column in 2014, Hankookilbo content business has expanded beyond digital content and ventured into publishing commerce.

Donggeurami Donggeurami is a company specializing in pet culture and contents. As a joint venture between Hankookilbo and NAVER, Donggeurami exclusively supply animal contents. The company produces a diverse range of contents, including expert-reviewed pet information and empathetic webtoons. It has expanded its business areas including publishing and commerce, and continues to grow. Together with animal lovers and experts, we create a world where animals and humans can live harmoniously.

E-mail animalandhuman@naver.com
SNS **Naver Post** [_post.naver.com/animalandhuman](https://post.naver.com/animalandhuman)
Naver Blog [_blog.naver.com/animalandhuman](https://blog.naver.com/animalandhuman)
Facebook [_www.facebook.com/animalandhuman](https://www.facebook.com/animalandhuman)
Instagram [_www.instagram.com/animal_n_human](https://www.instagram.com/animal_n_human)
Naver TV [_tv.naver.com/animalandhuman](https://tv.naver.com/animalandhuman)
Audioclip [_audioclip.naver.com/channels/977](https://audioclip.naver.com/channels/977)

R&D

92 Research & Development



Dongwha R&D Center

Established in 2022, Dongwha R&D Center serves as a dedicated research and development organization, leading in creating future value through continuous technology development and innovation. The center maximizes its' capabilities by bringing together infrastructure and researchers from all business units of Dongwha. This facilitates technological cooperation across various areas, including Wood panel, Fine chemicals, and Lithium-ion battery materials.

Date of Establishment November 2022
Address 164 Wolmi-ro, Jung-gu, Incheon

R&D

- R&D Vision**
- Strategic convergence research in Wood Panel · Fine Chemicals · Lithium-ion Battery Materials
 - New Product and Technology R&D
 - Preemptive investment and research in future new industries
 - Development of Intellectual Property Portfolio

- Research Areas**
- Board and Interior Building Materials**
- Board applied research
 - Board chemical research
 - Development of new products related to PB and MDF
- Fine Chemicals**
- R&D in chemical materials
 - Resins
 - Surface Materials
- Lithium-ion Battery Materials**
- R&D in electrolyte
 - Additives
 - Electronic materials
 - Mass production



R&D Acheivements

Wood Panel · Interior Building Materials · Fine Chemicals

1997	Development of E0 board and exterior MDF using tannin resins
1997	Development of infrared LPM(Low-Pressure Melamine)
1997	Development of E1 moisture-resistant resins for engineered wood flooring
1998	Development of wax emulsion for enhancing board water resistance
1999	Development of usage processes of recycled chips
2000	Development of eco-friendly new additives and surface coatings
2001	Development of TEGO Film for concrete formwork
2001	Introduction of the first click-lock laminate flooring in the domestic market
2001	Development of the world's first silver ion antibacterial and insect repellent laminate flooring
2001	Development of a scavenger additive to reduce formaldehyde emissions in boards
2004	Launch of premium flooring products: Dongwha Nature Flooring Natus, Crozen, and HomIN
2004	Introduction of AC3-grade Liquid Overlay film for enhanced laminate flooring
2004	Development of scavenger additives for PB (Particle Board) and MDF
2004	Localization of additives for TEGO Film (CPD, Wax Emulsion)
2004	Development of eco-friendly adhesives for plywood flooring installations
2004	Partnership with global resin specialist HEXION (formerly ORICA) for technology transfer and licensing
2005	Launch of Dongwha Nature Flooring Larte featuring EIR and Handscraped surfaces
2005	Development of eco-friendly E0 and SE0 resins for PB and MDF
2005	Development of moisture-resistant resins and boards for interior use in PB
2005	Development of the Korea's first TEGO Film for Full Logo
2006	Development of commercial-grade laminate flooring (Commerce) product line
2006	Introduction of the first solid wax emulsion for board applications in the domestic market
2006	Obtained Finland's eco-friendly M1 certification for Dongwha Nature Flooring
2007	Development of the world's first Super E0 board with an exclusive cylinder technology
2007	High-performance yellow foam for Dongwha Nature Flooring with practical patent application
2007	Introduction of AC4/ AC3-grade Liquid Overlay film for laminate flooring
2007	Development of Dizainwall products for Dongwha Nature Flooring
2007	Acquisition of eco-friendly building material certification (HB mark) for Dongwha LPM film
2007	Development of localized of Kraft paper for use in TEGO Film
2007	Pioneering the use of PMDI (non-formaldehyde resin) in PB manufacturing
2008	Obtained the quality certification for treated wood products
2008	Improved bending balance for laminate flooring
2008	Enhancements in CPD (Color Pigment Dispersant) properties for TEGO Film
2009	Environmental certification for various laminate flooring products, including Click, Crozen, Flollen, Larte, and school flooring
2009	Development of HPL Phenolic Resins
2010	Patent acquisition for an eco-friendly particle board manufacturing method
2010	Development and patent acquisition for innovative internal panel connection structures
2010	Development and acquisition of patent of flame-resistant LPM sheet
2010	Development of LPM resin
2010	Development of resin hardener for PB

2010	Development of hybrid board production technology using MDI for PB E0 (low formaldehyde emission) boards
2010	Development of manufacturing technology of wax emulsion using homogenizers
2010	Development of E1 resin for MDF and HDF applications
2010	Development of flame-resistant LPM film
2010	Development of innovative manufacturing technology for flame-retardant interior panels
2010	High-conductivity materials for improved thermal performance in laminate flooring
2011	Patent acquisition for LPM sheets suitable for coating applications
2011	Introduction of eco-friendly adhesive for wood veneer substrates, free from formaldehyde
2011	Development of Carnaubar Wax Recipe for use in TEGO Film
2011	Development of Forming phenolic resin for HPL(High-Pressure Laminate) applications
2011	Development of E0 15-type particle board
2011	Development of Formalin Zero Board
2011	Development of E0 green flooring material
2011	Development of Top Floor suitable for gymnasiums
2012	E0 resin development for MDF to meet strict environmental standards
2012	Development of Phenolic Resins for glass-wool
2012	Development of Phenolic Resins for filtering
2012	Development of PUF (Polyurea Foam) Resin for use in TEGO Film
2012	Development of high-gloss surface finishing technology
2012	Introduction of specialized cleaner for maintaining high-gloss surfaces Development of commercial PVC tile
2013	Development of Phenolic Resins for mineral wool
2013	Development of marine-grade coatings for ships
2013	Introduction of cost-effective HPL foaming resin
2013	Development of noise-reduction materials for laminate flooring applications
2013	Development of tube-type sealing agent for improved water resistance in laminate flooring
2013	Development of commercial-grade hardwood flooring product
2014	E0 resin development for thin plate MDF
2014	Development of MPF2, MPF3, and MPF4 phenolic resins for TEGO Film
2014	Enhanced properties through the development of high-performance CPD (Color Pigment Dispersant)
2014	Development of Carnaubar Wax Recipe for use in TEGO Film
2014	Development of Red TEGO Film for the Indian market
2014	Development of TEGO Film for the Russian market
2014	Development of high-quality S05 LPM film for coating applications
2014	Development of surface-differentiated ecostack sound-absorbing panels
2014	Development of laminate flooring with high strength and durable surface finish technology
2015	Development of Color PB
2015	Development of NAF HDF
2015	Development of PB E0 surface resin
2015	Development of Green ColorTEGO Film
2015	Development of PF with improved plasticity-MPF5
2015	Development of new flooring for residential use (room flooring development)

R&D Acheivements

Wood Panel · Interior Building Materials · Fine Chemicals

2015	Development of interior ceiling materials using inorganic materials
2015	Realization of HPL's Reality and development of differentiated products
2015	Development of general wood/ABS/glass interlocking door
2016	Development of PB SE0
2016	Development of MDF E0
2016	Development of resin for flame retardant EPS
2016	Development of Yellow ColorTEGO Film
2016	Localized back film for laminate flooring
2016	Development of surface material for front doors
2016	Development of coating film for press shortening
2016	Development of backing paper for eco-friendly NAF
2016	Development of SE0 eco-friendly flooring manufacturing technology
2017	Development of flame retardant board
2017	Development of Antifungal PB
2017	Development of Antifungal MDF
2017	Development of PB SE0 pigmented board
2017	Development of phenolic resin for phenolic foam
2017	Development of Black ColorTEGO Film
2017	Development of additives to shorten pressing of laminate flooring
2017	Development of new white film
2017	Development of new laminated film for body (PP film)
2017	Development of adsorption/decomposition technology for harmful substances
2017	Development of functional adhesive for wood flooring
2018	Development of phenolic resin for eco-friendly filter
2018	Development of low-emission eco-friendlyTEGO Film for Europe (45/117gsm)
2018	Development of overlay paper for HPM
2018	Development of VRGDW-oriented, premium LPM using 150gsm base paper
2018	Development of adhesive technology for NAF board and solid wood board
2018	Development of hardwood flooring with NAF HDF
2018	Development of herringbone flooring with NAF HDF
2018	Development of wall panel with stone patterns such as marble and granite
2018	Development of high-gloss high-gloss finish wall panel
2018	VRGDW, Development of E0 design wall for Korea
2018	VRGDW, Development of JIS F4S thin plate for Japan
2018	VRGDW, Development of HDHMR for India
2019	Development of cationic urea resin for wet steel
2019	Development of high abrasion resistant Overlay paper for HPM
2019	Development of pattern paper for HPM
2019	Development of high weight eco-friendlyTEGO Film for Europe (80/220gsm)
2019	Development of film for HPL Core Stock Standard
2019	Development of film for HPL Core Stock Forming

2019	Development of wide flooring with NAF HDF
2019	Development of 3D Texture flooring with NAF HDF
2019	Development of entry-level NAF flooring
2019	Development of wide wall panel
2019	Development of construction adhesive for wide wall panel
2019	Development of high-gloss finishing technology with flame retardant function
2019	Development of exclusive decorative panels for exterior
2019	Development of construction auxiliary materials for exterior panels
2019	DWMY, Development of JIS F4S for MTH for Japan
2019	DWMY, Development of MDF to replace plywood
2019	DWMY, Development of E0 HDF for Korea
2019	VRGDW, Development of HDF to replace solid wood
2019	VRGDW, Development of JIS F4S thick plate for Japan
2020	Development of FR white film for Europe
2020	Development of Phenolic Resins for low FFA glass-wool
2020	Development of phenolic resin for static friction plate
2021	Development of Structural PB
2021	Development of wood fiber insulation
2021	Development of eco-friendly starch resin
2021	Development of phenolic resin for wet general friction material
2021	Development of melamine resin for concrete admixture
2022	DWN, Development of waterproof NAF flooring
2022	Development of Powder Scavenger for eco-friendly board
2022	Development of HPL Core product using recycled paper
2022	Development of modified olefin-based adhesive for flooring bonding
2022	Development of semi-non-combustible HPL
2023	Development of pMDI cross-linker
2023	Development of flame retardant board for Dizainwall
2023	Development of Phenolic Resins for green glass-wool
2023	Development of phenolic resin for wet friction material
2023	Development of plywood LPM for Europe

R&D Acheivements

Lithium-ion Battery Materials

Additives for electrolyte

- 2017 Development of electrolyte solution stabilizing additive (PA65)
- 2017 Development of low resistance additives (PA707 & PA717)
- 2018 Development of high temperature stabilizing additive (PA355)
- 2021 Improvement of high-temperature feature and development of electrolyte solution stabilizing additive (PA715)
- 2021 Development of high-output stabilizing additive (PA800)
- 2022 Development of high-output stabilizing additive (PA800)
- 2022 Recognition with the IR52 Jang Young-Sil Award
- 2022 Development of high-output stabilizing additive (PA800)

Lithium-ion Battery Materials

Electrolyte

- 2017 Development of lithium Lithium-ion battery electrolyte for electric vehicles (xEV)
- 2018 Development of high-potential small battery electrolyte for unmanned aerial vehicles
- 2018 Development of lithium-ion battery electrolyte for POWER TOOL
- 2019 Development of electrolyte for circular battery for e-Bike
- 2020 Development of electrolytes for Next Generation High Voltage
- 2020 Development of electrolyte for cylindrical lithium-ion batteries
- 2022 Development of new electrolyte for lithium lithium-ion batteries for electric vehicles and electric buses
- 2022 Development of new electrolyte for lithium lithium-ion batteries for electric bicycles
- 2022 Development of new electrolyte for lithium lithium-ion battery for electric vehicle (HEV)
- 2022 Development of new electrolyte for lithium lithium-ion batteries for energy storage (ESS) & electric vehicles (EV)

100

114

Lithium-ion Battery Materials

National R&D Project, Implemented by the Ministry of Trade, Industry and Energy (In progress)

- 2018 Industrial Development Project for Economic Cooperation Zone
Development of functional additives for capacity improvement through high-voltage operation
- 2019 Strategic Core Material Technology Development Project
Development of electrolyte solution technology that is high-performance and high-safety with ionic conductivity at over 9mS/cm and 5% or less high heat-resistant separator for Na-ion batteries at 200°C
- 2022 Material Component Technology Development - Material Component Package Type
Wet-synthesis source technology for 1mS/cm-class sulfide solid electrolyte for electric vehicles to enhance safety of high-energy Lithium-ion cells
- 2022 Material Component Technology Development - Material Component Package Type
Development of technology to manufacture 650Wh/kg anode active material ion conductor composite powder of multi core shell structure based on ceramic ion conductor
- 2023 Material Component Technology Development - Material Component Package Type
Development of technology to manufacture electrolyte solution with high impregnation for high-performance lithium iron phosphate cell thick-film electrode

101

114

Major Patent Registration(Application)

Board

Wood panel and manufacturing method thereof (10-0679725)

Flame retardant solution for wood, preparing method thereof, and wood board (10-1805463)

Interior Building Materials

Extension and contraction absorbing floor board (10-1239366)

Extension and contraction absorbing floor board (10-1239750)

Articulate bracket for fence assembly (10-1271236)

Wood flooring with elastic adhesive (10-1338385)

Extension and contraction absorbing floor board by injection moulding (10-1393531)

Floorboard capable of absorbing expansion and contraction (10-1444826)

Absorption member for extension and contraction of panel (10-1552178)

Dust collector for floor construction (10-0882798)

Laminate flooring foam and the method thereof (10-0887603)

The manufacturing process for flooring board with nano platinum or nano gold and flooring board produced by this manufacturing process (10-0919183)

Floor panels with tongue-and-tongue joint structure (10-0947849)

Connecting structure of panels for interior (10-0947850)

Chemicals

Resin/Surface Materials

The Manufacturing Process of Antibiotic Laminate Flooring with Nano Silver Ion and the Antibiotic Laminate Flooring Produced by This Manufacturing Process (10-0574295)

The Manufacturing Process of Antibiotic Low Pressure Laminate with Nano Silver Ion and the Antibiotic Low Pressure Laminate by This Manufacturing Process (10-0574296)

Process for preparing fire retardant melamine resin and fire retardant melamine sheet using the same (10-1226752)

Manufacturing method of melamine resin having excellent gloss and adhesion and melamine resin using the manufacturing method (10-1254296)

Manufacturing method of melamine resin having excellent gloss and adhesion and melamine resin using the manufacturing method (10-1286590)

Ink composition for TEGO Film gravure printing using soybean protein and maufacturing method the same (10-1316113)

Lithium-ion Battery Materials

Non-aqueous electrolyte comprising oxalato phosphate derivative (10-1317128)

Electrolyte for lithium secondary battery and lithium secondary battery using the same (10-1433662)

Electrolyte for lithium secondary battery and lithium secondary battery containing the same (10-1581780)

Electrolyte for high capacity secondary battery and secondary battery containing the same (10-1581782)

Electrolyte for lithium secondary battery and lithium secondary battery containing the same (10-1586681)

Electrolyte for lithium secondary battery and lithium secondary battery containing the same (10-1625848)

Electrolyte for long cycle life secondary battery and secondary battery containing the same (EP2928005)

Electrolyte for long cycle life secondary battery and secondary battery containing the same (ZL201510151513.7)

Electrolyte for lithium secondary battery and lithium secondary battery containing the same (101683534)

Nonaqueous Electrolyte for secondary battery and secondary battery containing the same (101736771)

Electrolyte for secondary battery and secondary battery containing the same (101909227)

Non-Aqueous Electrolyte Solution for Lithium Ion Secondary Battery and Lithium Ion Secondary Battery Comprising the Same (102177033)

Electrolyte for Secondary Battery and Secondary Battery Comprising the Same (102023677)

Electrolyte for Secondary Battery and Secondary Battery Comprising the Same (102023678)

Electrolyte Solution for Secondary Battery and Secondary Battery Comprising the Same (10-2277754)

Electrolyte Solution for Secondary Battery and Secondary Battery Comprising the Same (10-2264048)

Electrolyte Solution for Secondary Battery and Secondary Battery Comprising the Same (1020200098457)

Electrolyte Solution for Secondary Battery and Secondary Battery Comprising the Same (1020210028511)

Novel compound, electrolyte for secondary battery including the same, and secondary battery including the same (10-2371981)

Novel compound, electrolyte for secondary battery including the same, and secondary battery including the same (PCT/KR2021/017825)

Electrolyte solution for secondary battery, and secondary battery comprising same (PCT/KR2022/001751)

HRD

106 Dongwha Culture Village



Date of Establishment October 2013
Address 1708-38 Bukhangang-ro, Hwado-eup, Namyangju-si, Gyeonggi-do, Korea
Homepage www.dongwhaculturevillage.com

Dongwha Culture Village is a premium training facility for developing creative and innovative talent. Dongwha Culture Village is a space where you can refresh with your colleagues, friends, and family and learn new knowledge while looking at the blue waves and beautiful natural scenery of Bukhangang (North Han River). Through comprehensive training programs and educational opportunities, we are committed to cultivating core talents and developing global leaders who will be responsible for shaping the future of Dongwha Group as a world-class company.

Contacts

110 Contacts

Contacts

Wood Panel

Domestic Business Sites

Dongwha Enterprise

Seoul Office
Address_53-2 Yeouinaru-ro, Yeongdeungpo-gu, Seoul, Korea
Homepage_ www.dongwha.com

Incheon PB Plant
Address_133 Yeomgok-ro, Seo-gu, Incheon, Korea
Tel_ +82-2-2122-0653

Incheon MDF Plant
Address_164 Wolmi-ro, Jung-gu, Incheon, Korea
Tel_ +82-2-2122-0653

Incheon Laminate Flooring Plant
Address_28 Gajeong-ro, 97-bungil, Seo-gu, Incheon, Korea
Tel_ +82-1899-2837

Asan MDF Plant
Address_1181-40 Hyeondai-ro, Inju-myun, Asan-si, Chungcheongam-do, Korea
Tel_ +82-2-2122-0653

Overseas Business Sites

Dongwha Malaysia

Nilai MDF Plant
Address_ Lot 3726 & 3728, Nilai Industrial Estate, Mukim Setul, Daerah Seremban,71800 Nilai, Negeri Sembilan, Malaysia
Tel_ +60-6-799-3000 Homepage_ www.dongwha.com/my

Merbok MDF Plant
Address_Lot 2998, Jalan Raya Merbok, 08400 Merbok, Kedah Darul Aman, Malaysia
Tel_ +60-4-457-3070 Homepage_ www.dongwha.com/my

VRG Dongwha

Ho Chi Minh MDF Plant
Address_Lot G. Minh Hung III Industrial Park, Minh Hung commune, Chon Thanh District, Binh Phuoc Province, Vietnam
Tel_ +84-0271-364-5500 Homepage_ www.dongwha.com/vnen

Dongwha Vietnam

Hanoi MDF Plant · Laminate Flooring Plant
Address_Lot CN1,CN2,CN3,CN4Song Cong II Industrial Park, Tan Quang Commune, Song Cong City, Thai Nguyen Province, Vietnam
Tel_ +84-208-393-5622 Homepage_ www.dongwhavietnam.com

Dongwha Australia

Bombala Lumber Plant
Address_1 Sandy Lane Bombala NSW 2632, Australia
Tel_ +61-2-6459-5555 Homepage_ www.dongwha.com/au

Chemicals

Domestic Business Sites

Dongwha Enterprise

Seoul Office
Address_53-2 Yeouinaru-ro, Yeongdeungpo-gu, Seoul, Korea
Homepage_ www.dongwha.com

Incheon 1st Resin Plant · Surface Materials Plant
Address_133 Yeomgok-ro, Seo-gu, Incheon, Korea
Tel_ +82-32-585-0728

Incheon 2nd Resin Plant
Address_164 Wolmi-ro, Jung-gu, Incheon, Korea
Tel_ +82-32-585-0728

Taeyang Chemical

Incheon Head Office · 1st Resin Plant
Address_34 Namdong-daero, 79beon-gil, Namdong-gu, Incheon, Korea
Tel_ +82-32-811-3100-3 Homepage_ www.sunresin.co.kr

Incheon 2nd Resin Plant
Address_19 Namdong-daero, 79beon-gil, Namdong-gu, Incheon, Korea
Tel_ +82-32-811-3100-3 Homepage_ www.sunresin.co.kr

Dongwha Electrolyte

Nonsan Head Office · Electrolyte Plant
Address_45, Saneopdanji-ro 5-gil, Seongdong-gu, Nonsan-si, Chungcheongam-do, Korea
Tel_ +82-41-732-1707-8 Homepage_ www.dongwhaelectrolyte.com

Overseas Business Sites

Dongwha Finland

Kotka Surface Materials Plant
Address_P.O. BOX 17 / FI-48101 Kotka, Finland
Tel_ +358-50-570-0928 Homepage_ www.dongwha.com/fi

Dongwha Electrolyte Tianjin

Tianjin Electrolyte Plant
Address_Xinye 8 Street and Xinsheng Road Street Intersection, West District of TEDA, Tianjin, China
Tel_ +86-22-6632-5 Homepage_ www.dongwhaelectrolyte.com

Dongwha Electrolyte Malaysia

Senai Electrolyte Plant
Address_PTD 103252, Jalan Idaman 3/11, Taman Desa Idaman, Senai Industrial Park, 81400 Senai, Johor, Malaysia
Tel_ +60-7-595-1300 Homepage_ www.dongwhaelectrolyte.com

Dongwha Electrolyte Hungary

Soskut Electrolyte · NMP Recycling Plant
Address_Ipari park 067/4, Soskut, Hungary 2038
Tel_ +36-30-814-1825 Homepage_ www.dongwhaelectrolyte.com

Dongwha Electrolyte USA

Tennessee Electrolyte Plant
Address_4400 Guthrie HWY, Clarksville TN USA
Tel_ +1-513-638-1813 Homepage_ www.dongwhaelectrolyte.com

Contacts

Auto Life

MPARK Headquarters Address_ 80 Yeomgok-ro, Seo-gu, Incheon, Korea
Tel_ +82-1544-4967 Homepage_ www.m-park.co.kr

MPARK Tower Address_ 158 Bonsudae-ro, Jung-gu, Incheon, Korea
MPARK Land Address_ 149 Yeomgok-ro, Seo-gu, Incheon, Korea
MPARK Hub Address_ 52 Yeomgok-ro, Seo-gu, Incheon, Korea

Media

Hankookilbo Address_ 16th - 18th Fl. Wise Tower, 17, Sejong-daero, Jung-gu, Seoul, Korea
Tel_ +82-2-724-2114 Homepage_ www.hankookilbo.com

The Korea Times Address_ 14th Fl. Wise Tower, 17, Sejong-daero, Jung-gu, Seoul, Korea
Tel_ +82-2-724-2359 Homepage_ www.koreatimes.co.kr

Global E&B Address_ 10th Fl. Gongdeok Core Building, 47, Mallijae-ro, Mapo-gu, Seoul, Korea
Tel_ +82-2-724-2626 Homepage_ globalenb.com

Sportstoto-Korea Address_ 4-5th Fl. Haenam Building 2, 12, Sejong-daero 12-gil, Jung-gu, Seoul, Korea
Tel_ +82-1588-4900 Homepage_ www.sportstoto-korea.com

Donggeurami Address_ 3rd Fl. 183 Seongmisan-ro, Mapo-gu, Seoul, Korea
Tel_ +82-2-724-2791 Homepage_ www.hankookilbo.com/Collect/6621

R&D

Dongwha R&D Center Address_ 164 Wolmi-ro, Jung-gu, Incheon, Korea

HRD

Dongwha Culture Village Address_ 1708-38 Bukhangang-ro, Hwado-eup, Namyangju-si, Gyeonggi-do, Korea
Tel_ +82-31-8034-4608-9 Homepage_ www.dongwhaculturevillage.com

